

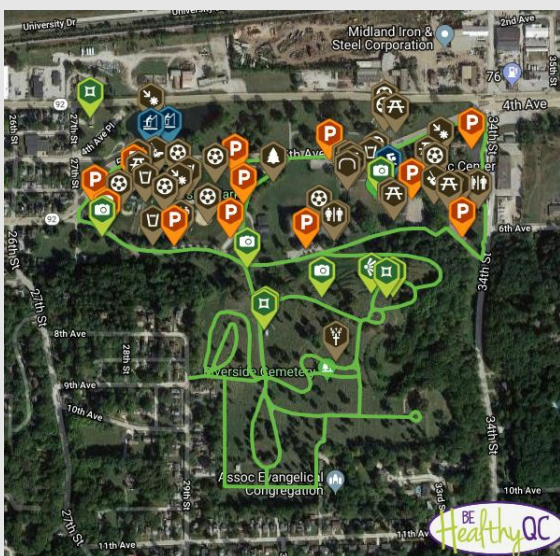


## QCHI E-Newsletter

In celebration of National Philanthropy Day, we'd like to thank all of our organizational and individual sponsors!



To view the list of current sponsors, visit our [website](#).



### QC Trail of the Month

Each month, we highlight a trail in the QCA to help you plan your next trail adventure.

#### Riverside Park Walking Paths, Illinois

This 3.6 mile network of paths weaves throughout Riverside Park and adjacent Riverside Cemetery in Moline, IL. These hard-surfaced paths are open to walkers and joggers and span a mix of terrain from gardens to recreation areas to terraces designed by the famous Chicago Architect, William Le Baron Jenney, that provide picturesque views of the Mississippi River. Parking is available off of 34th Street, off of 5th Avenue, and within the park.

[Visit QCTrails.org](http://VisitQCTrails.org)

### Will you join us in creating a healthy community?

Did you know that the Quad City Health Initiative accepts contributions online? Consider celebrating Giving Tuesday on November 27th with an online contribution to QCHI!

[Donate](#)

STAY CONNECTED

