



Mar. | ISSUE |  
2016 | No. 11 |

# Be Healthy QC Newsletter



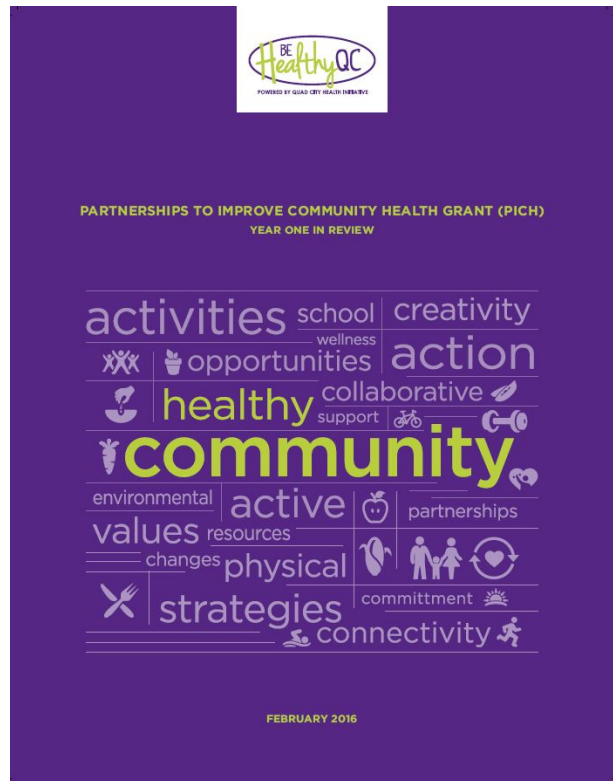
## Welcome to the Be Healthy QC Newsletter!

### PICH Grant Year One in Review!

Our staff has been working very hard and is excited to unveil the Partnerships to Improve Community Health (PICH) Grant Year One in Review! This report has everything you need to know about our four projects being implemented under the grant, as well as information on Be Healthy QC and the Quad City Health Initiative!

Inside you'll find infographics, success stories about school wellness, community gardens, Safe Routes to School and QC Trails.org. We couldn't have done this without all of our community partners, sponsors and volunteers - Thanks Everyone!

Check out an interactive digital version of the report [here!](#)



**QC Trails is in the 2016 Quad Cities  
Convention & Visitors Bureau Activity Guide!**

Check it out by clicking [HERE!](#)  
Specific mentions are on pages 7 and 39.

**Want to be recognized for the work your organization or business is doing?  
Take our Worksite Wellness Healthy Workplace Assessment here!**

Be Healthy QC recently unveiled a new healthy workplace recognition program. Businesses that meet at least 10 of the 20 items on the assessment found at the link below will receive a letter and certificate of recognition for their worksite wellness efforts, as well as a window cling to display at the entrance of their business. If you would like your business to be recognized for your progress in creating a healthy workplace, please download and complete the assessment linked below and return it to: [quadcityhealthinitiative@gmail.com](mailto:quadcityhealthinitiative@gmail.com).

[Take Our Assessment Here](#)

Like us on Facebook 

Quad City Health Initiative  
563-421-2826  
[plumbe@genesishealth.com](mailto:plumbe@genesishealth.com)  
<http://www.qchealthinitiative.org>

Join Our  
Mailing List



\*Made possible with funding from the Centers  
for Disease Control and Prevention\*

Quad City Health Initiative, Davenport Medical Center (West Campus),  
Central Park Medical Pavilion 2, Suite 3100,  
1401 West Central Park Avenue, Davenport, IA 52803

[SafeUnsubscribe™ carknern@genesishealth.com](#)

[Forward this email](#) | [Update Profile](#) | [About our service provider](#)

Sent by [plumbe@genesishealth.com](mailto:plumbe@genesishealth.com) in collaboration with

**Constant Contact** 

Try it free today